

MAYTAG

Maytag
Customer Service

Maytag Commercial

MAH14
Neptuna

**Washer
Parts Catalog**

16008478
Issued 3/97

GENERAL SAFETY PRECAUTIONS

Information contained in this manual is intended for use by a qualified service technician familiar with proper and safe procedures to be followed when repairing an electrical appliance. All tests and repairs should be performed by a qualified service technician equipped with proper tools and measuring devices. All component replacements should be made by a qualified service technician using only factory approved replacement parts.

Improper assembly or adjustment may occur if service or repair is attempted by persons other than qualified service technicians or if parts other than approved replacement parts are used. Improper assembly or adjustment can create hazardous conditions.

There can be risk of injury or electrical shock while performing services or repairs. Injury or electrical shock can be serious or even fatal. Consequently, extreme caution should be taken when performing voltage checks on individual components of a product. Except as necessary to perform a particular step in servicing a product, the electrical power supply should **ALWAYS** be disconnected when servicing a product.

Further, this appliance **MUST** be properly grounded. Never plug in or direct wire an appliance unless it is properly grounded and in accordance with all local and national codes. See installation instructions that accompany the product for grounding this appliance.

CONTENTS

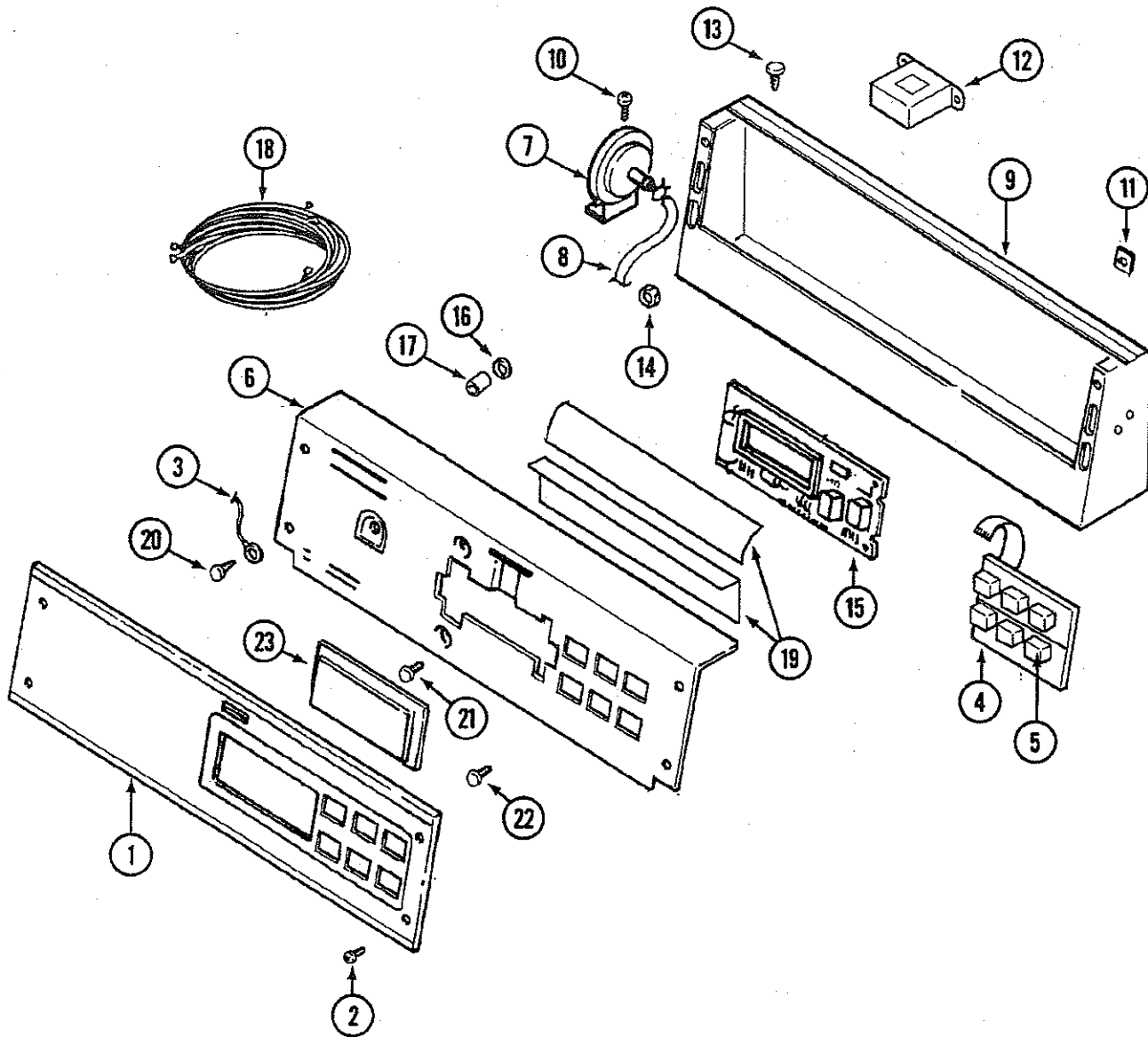
SECTION	PAGE
CONTROL PANEL	2
CONTROL CENTER	4
TOP	8
CABINET-FRONT	10
DOOR SHROUD & DOOR LATCH ASSEMBLY	12
DOOR & FRONT PANEL.....	14
CABINET-REAR	16
OUTER TUB & MOTOR	18
SPINNER ASSEMBLY & OUTER TUB COVER	20
BASE	22
WIRING DIAGRAM	24

NOTE: This Parts Catalog, P/N 16008478, contains repair parts for the following Commercial Washer models:

MAH14PDAAL
MAH14PDAAW
MAH14PDABL
MAH14PDABW
MAH14PSAAW

Section: CONTROL PANEL

Model: MAH14PDAAL MAH14PDAAW MAH14PDABL MAH14PDABW MAH14PSAAW



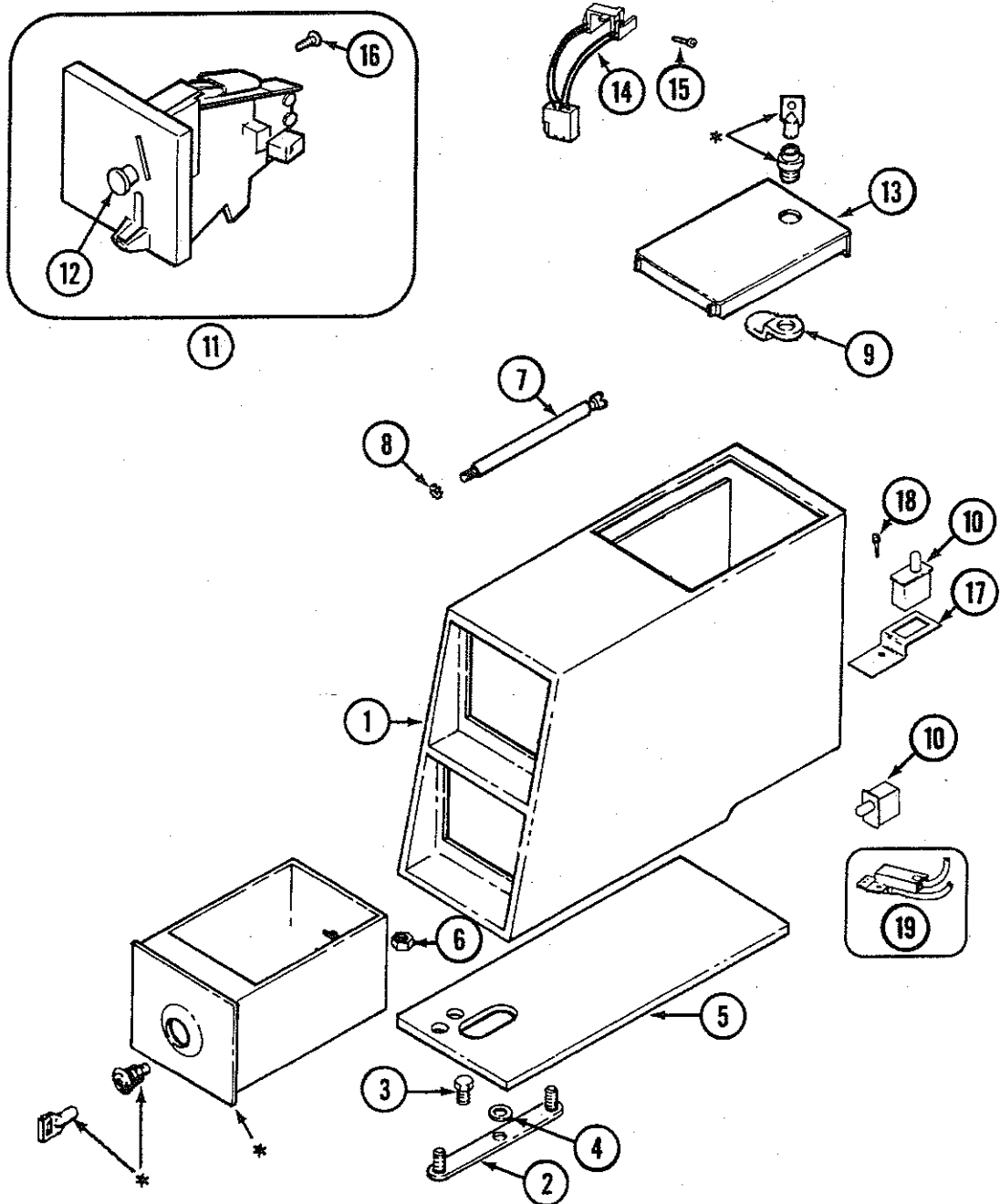
MAH14PSAAW	5
MAH14PDABW	4
MAH14PDABL	3
MAH14PDAAW	2
MAH14PDAAL	1

No.	PART NUMBER	DESCRIPTION	#SEE BELOW	1	2	3	4	5
1	22002043	PANEL, CONTROL	10	1	1	1	1	1
2	215506	SCREW, CONTROL PANEL	10	4	4	4	4	4
3	205810	WIRE, GROUND	10	1	1	1	1	1
4	206808	CONTROL SWITCH ASSEMBLY	10	1	1	1	1	1
-	215527	SCREW, CONTROL SWITCH	10	2	2	2	2	2
5	215517	PUSHBUTTON, CONTROL SWITCH	10	2	2	2	2	2
6	22002036	SWITCH BRKT & BACK BRKT (WHT)	10	-	1	-	1	1
	22002037	(ALM)	10	1	-	1	-	-
7	22002048	SWITCH, PRESSURE	10	1	1	1	1	1
8	22002010	HOSE, PRESSURE SWITCH	10	1	1	1	1	1
-	22002051	CLIP, PRESSURE SWITCH HOSE	10	1	1	1	1	1
9	22002113	CONSOLE (WHT)	10	-	1	-	1	1
	22002114	(ALM)	10	1	-	1	-	-
10	22001996	SCREW, CONSOLE	10	5	5	5	5	5
11	215003	FASTENER, SCREW	10	2	2	2	2	2
12	22001960	TRANSFORMER	10	1	1	1	1	1
13	211251	SCREW, TRANSFORMER	10	2	2	2	2	2
14	22001419	NUT, TRANSFORMER	10	2	2	2	2	2
15	22002030	BOARD, CONTROL	10	1	1	1	1	1
16	912077	LOCKNUT, CONTROL BOARD	10	6	6	6	6	6
17	33001204	STAND-OFF, CIRCUIT BOARD	10	4	4	4	4	4
18	22002110	WIRE HARNESS, MAIN	10	1	1	1	1	1
19	22001511	DEFLECTOR, WATER (W/ADHESIVE)	10	2	2	2	2	2
20	211252	SCREW, GROUND WIRE	10	1	1	1	1	1
21	215526	SCREW, CIRCUIT BOARD	10	2	2	2	2	2
22	215527	SCREW, BACK BRACKET	10	2	2	2	2	2
23	22001962	COVER, DISPLAY	10	1	1	1	1	1

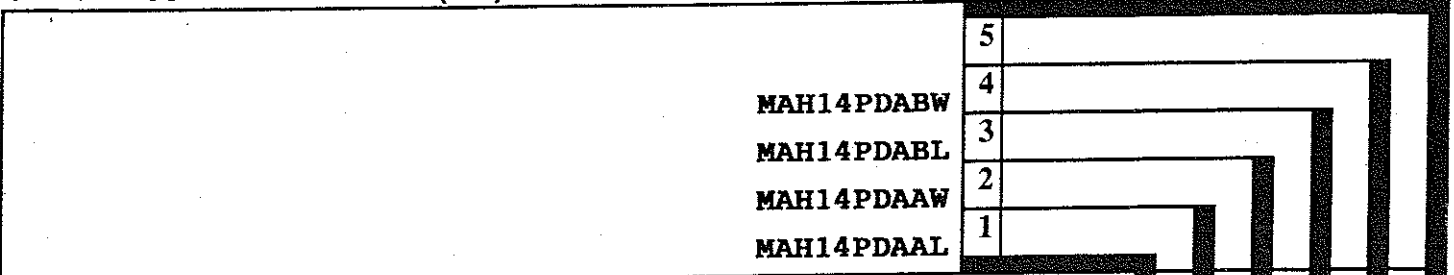
*COLOR CODE | (-)=NOT SHOWN | #-SERIES, SER PRE OR RUN NO. | 46671

Section: CONTROL PANEL (PD)

Model: MAH14PDAAL MAH14PDAAW MAH14PDABL MAH14PDABW



* CONTACT YOUR COMMERCIAL LAUNDRY DISTRIBUTOR



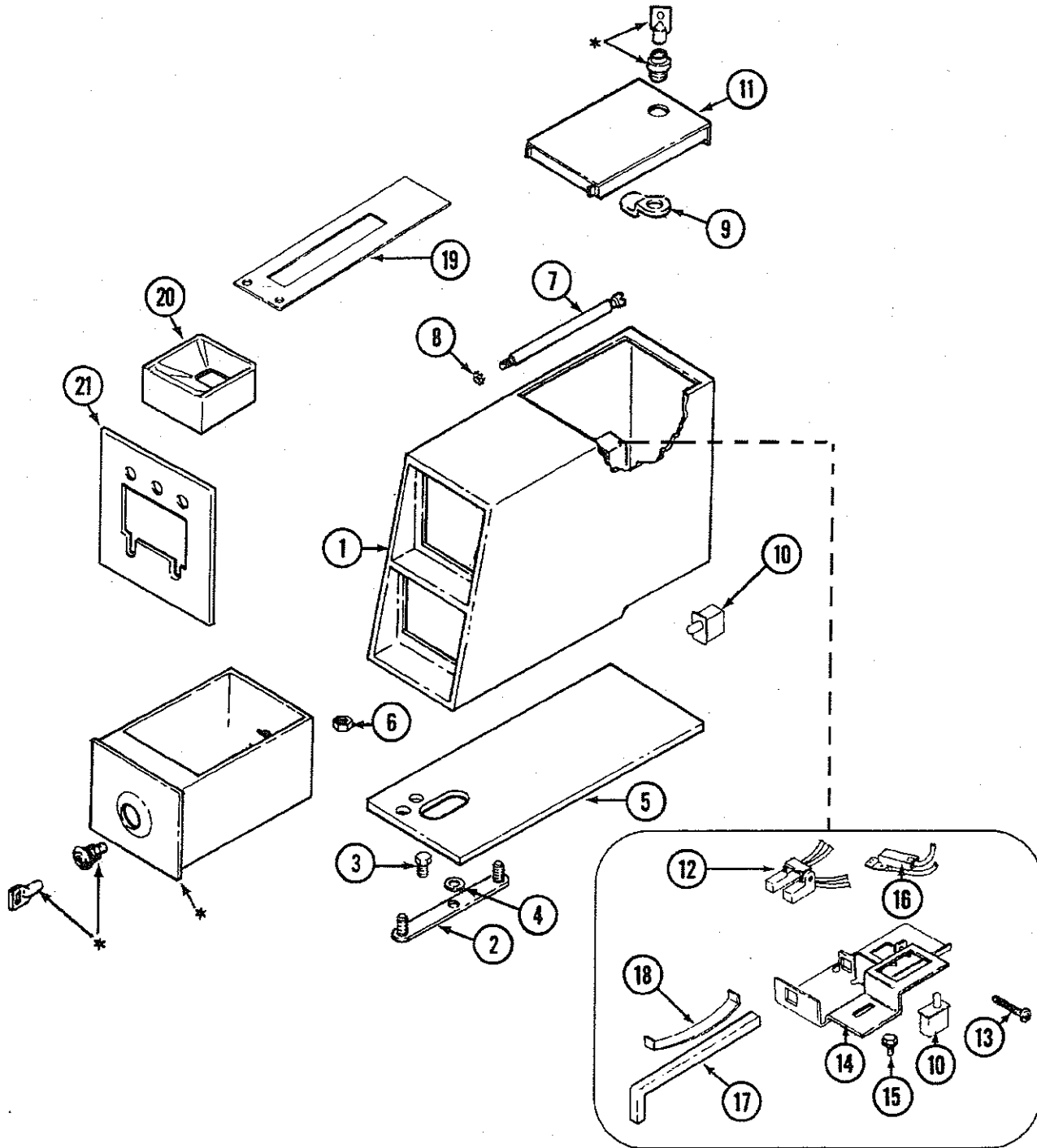
No.	PART NUMBER	DESCRIPTION	#SEE BELOW	1	2	3	4	5
1	22001871	VAULT, COIN (WHT)	10	-	1	-	1	
	22001872	(ALM)	10	1	-	1	-	
2	22001810	STRAP, MOUNTING	10	1	1	1	1	
3	22001996	SCREW, MOUNTING STRAP	10	1	1	1	1	
4	910309	WASHER, MOUNTING STRAP	10	1	1	1	1	
5	22002072	GASKET, CONTROL CENTER (WHT)	10	-	1	-	1	
	22002073	(ALM)	10	1	-	1	-	
6	052740	NUT, CASE MOUNTING	10	2	2	2	2	
7	213035	BOLT, LOCKING	10	2	2	2	2	
8	910181	LOCKWASHER, LOCKING BOLT	10	2	2	2	2	
9	22001905	CAM, LOCKING	10	1	1	1	1	
10	33001250	SWITCH, SENSOR	10	2	2	2	2	
-	912012	SCREW, SENSOR SWITCH	10	2	2	2	2	
11	22001873	COIN DROP ASSEMBLY	10	1	1	-	-	
	22001875	(CAN)	10	-	-	1	1	
-	22002144	FACEPLATE	10	1	1	1	1	
12	216200	BUTTON, RETURN	10	1	1	1	1	
13	22001910	DOOR, ACCESS (WHT)	10	-	1	-	1	
	22001911	(ALM)	10	1	-	1	-	
14	22001965	OPTIC SWITCH ASSEMBLY	10	1	1	1	1	
15	314665	SCREW, OPTIC SWITCH	10	1	1	1	1	
16	216068	SCREW, COIN DROP	10	3	3	3	3	
17	22001404	BRACKET, SWITCH	10	1	1	1	1	
18	22001069	SCREW, SWITCH BRACKET	10	1	1	1	1	
19	22001966	HARNESS, SENSOR SWITCH	10	1	1	1	1	

*COLOR CODE | (-)=NOT SHOWN | #-SERIES, SER PRE OR RUN NO.

46683

Section: CONTROL PANEL (PS)

Model: MAH14PSAAW



*CONTACT YOUR COMMERCIAL LAUNDRY DISTRIBUTOR

MAH14PSAAW



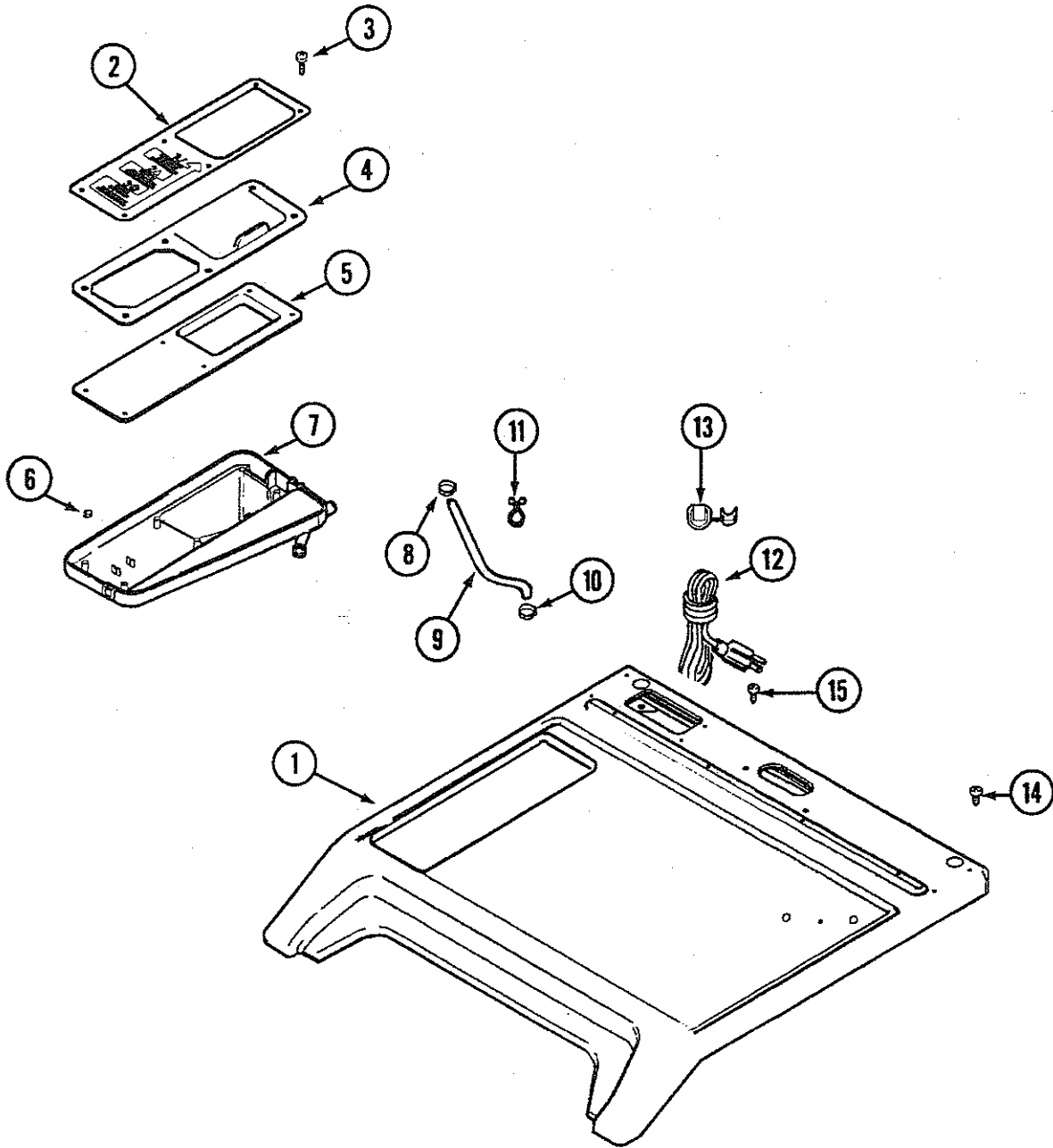
No.	PART NUMBER	DESCRIPTION	#SEE BELOW	1	2	3	4	5
1	22001871	VAULT, COIN (WHT)	10	1				
2	22001810	STRAP, MOUNTING	10	1				
3	22001996	SCREW, MOUNTING STRAP	10	1				
4	910309	WASHER, MOUNTING STRAP	10	1				
5	22002072	GASKET, CONTROL CENTER (WHT)	10	1				
6	052740	NUT, CASE MOUNTING	10	2				
7	22001903	LOCKING BOLT, COIN SLIDE	10	1				
8	910387	LOCKWASHER, LOCKING BOLT	10	1				
-	211605	CLIP, LOCKWASHER	10	1				
9	22001905	CAM, LOCKING	10	1				
10	33001250	SWITCH, SENSOR	10	2				
-	912012	SCREW, SENSOR SWITCH	10	2				
11	22001910	DOOR, ACCESS (WHT)	10	1				
12	22001965	OPTIC SWITCH ASSEMBLY	10	1				
13	314665	SCREW, OPTIC SWITCH	10	1				
14	33001253	BRACKET, SENSOR SWITCH	10	1				
15	212276	SCREW, SWITCH BRACKET	10	1				
-	211605	CLIP, BRACKET SCREW	10	1				
16	22001966	HARNESS, SENSOR SWITCH	10	1				
17	216442	ROD, ACTUATOR	10	1				
18	33001252	SPRING, SWITCH	10	1				
19	22001812	ACTUATOR KIT	10	1				
20	22001878	CHUTE, COIN	10	1				
21	22001879	PLATE, ADAPTER (WHT)	10	1				
-	22001904	BRACE, COIN SLIDE	10	1				

*COLOR CODE (-)=NOT SHOWN #-SERIES, SER PRE OR RUN NO.

46684

Section: TOP

Model: MAH14PDAAL MAH14PDAAW MAH14PDABL MAH14PDABW MAH14PSAAW



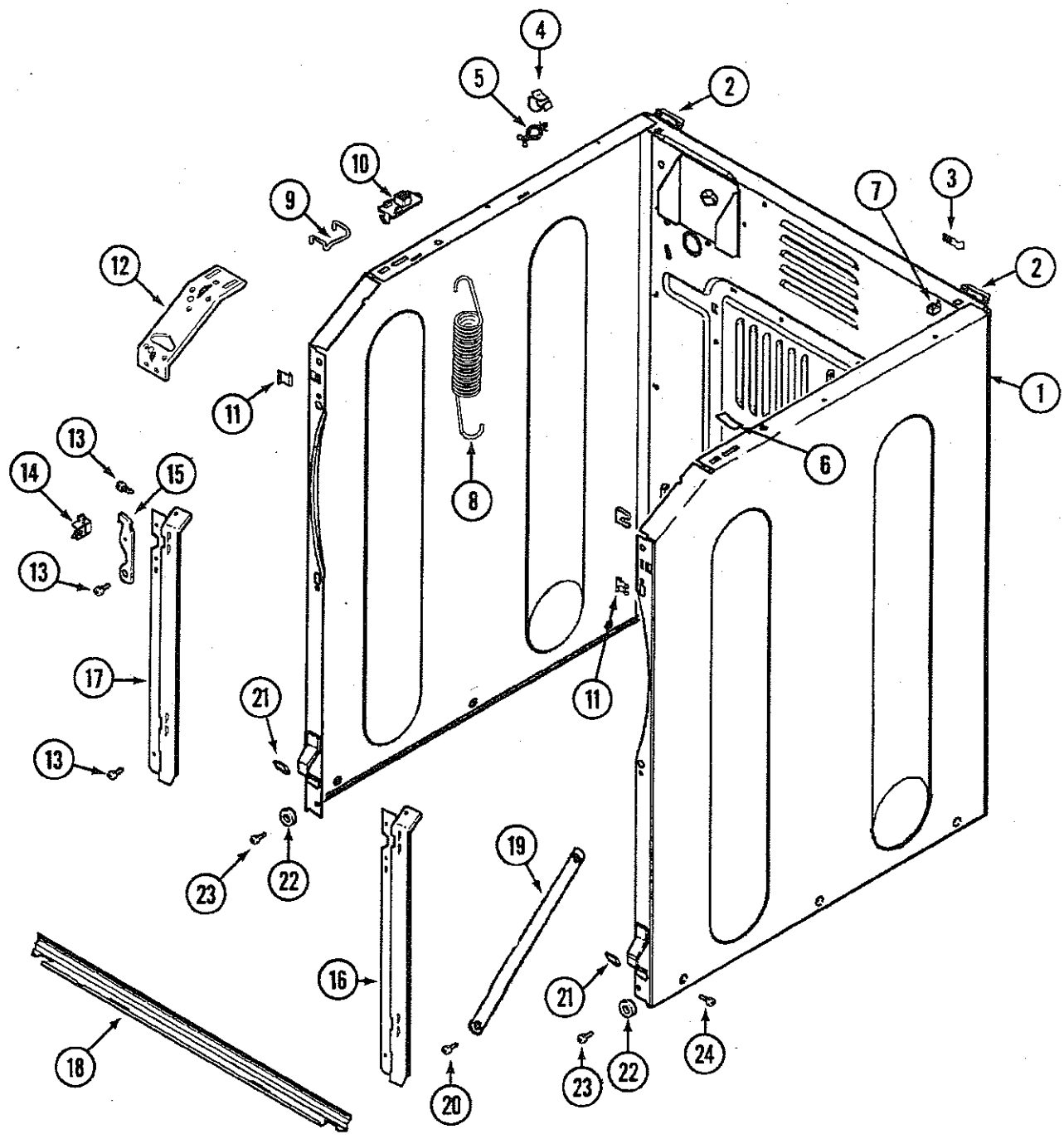
MAH14PSAAW	5
MAH14PDABW	4
MAH14PDABL	3
MAH14PDAAW	2
MAH14PDAAL	1

No.	PART NUMBER	DESCRIPTION	#SEE BELOW	1	2	3	4	5
1	22002107	COVER, TOP (WHT)	10	-	1	-	1	1
	22002108	(ALM)	10	1	-	1	-	-
2	22002032	COVER, COMM. DISPENSER (WHT)	10	-	1	-	1	1
	22002176	(ALM)	10	1	-	1	-	-
3	22002060	SCREW, DISPENSER	10	6	6	6	6	6
4	22002091	LID, COMMERCIAL DISPENSER	10	1	1	1	1	1
5	22002074	BEZEL, COMMERCIAL	10	1	1	1	1	1
6	22002031	PALNUT	10	3	3	3	3	3
7	22002075	DISPENSER BOTTOM, COMMERCIAL	10	1	1	1	1	1
8	22002054	CLAMP, STEPLESS	10	1	1	1	1	1
9	22002084	HOSE, SHOWER	10	1	1	1	1	1
10	201011	CLAMP, HOSE	10	1	1	1	1	1
11	22002027	WIRE TIE, SHOWER HOSE	10	2	2	2	2	2
	- 212276	SCREW, WIRE TIE	10	1	1	1	1	1
12	22001178	CORD, POWER	10	1	1	1	1	1
13	211881	GROMMET, CORD	10	1	1	1	1	1
14	912365	SCREW, POWER CORD	10	1	1	1	1	1
15	210186	SCREW, GROUND WIRE	10	1	1	1	1	1

*COLOR CODE | (-)=NOT SHOWN | #-SERIES, SER PRE OR RUN NO. 46687

Section: CABINET-FRONT

Model: MAH14PDAAL MAH14PDAAW MAH14PDABL MAH14PDABW MAH14PSAAW



	MAH14PSAAW	5
	MAH14PDABW	4
	MAH14PDABL	3
	MAH14PDAAW	2
	MAH14PDAAL	1

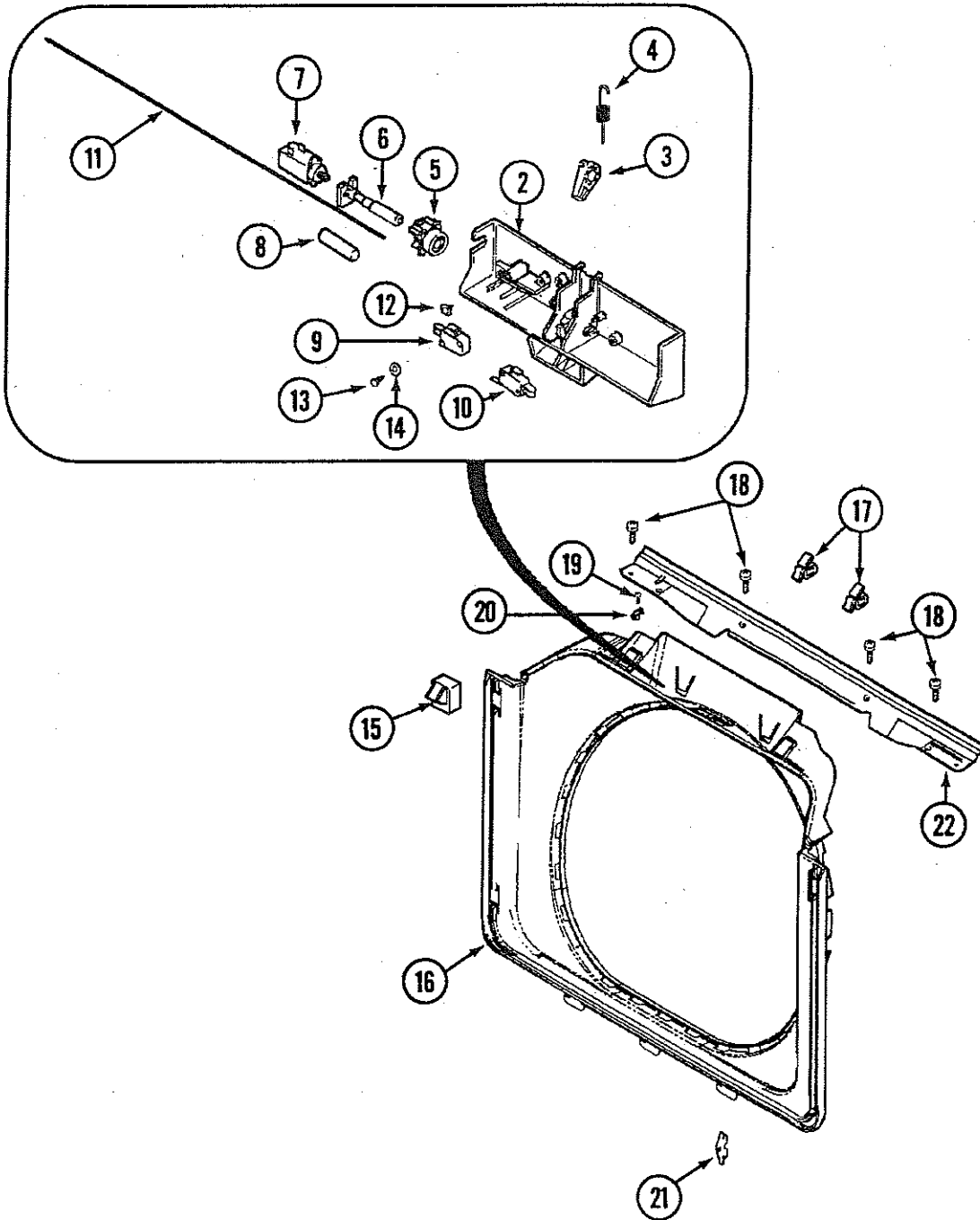
No.	PART NUMBER	DESCRIPTION	#SEE BELOW	1	2	3	4	5
1	22002016	CABINET ASSEMBLY (WHT)	10	-	1	-	1	1
	22002017	(ALM)	10	1	-	1	-	-
2	33001827	BRACKET, CABINET HINGE	10	2	2	2	2	2
3	22002178	BRACKET, AIR DOME HOSE	10	2	2	2	2	2
-	22001996	SCREW, BRACKET	10	2	2	2	2	2
-	22002179	TIE, CABLE	10	1	1	1	1	1
4	310376	CLIP, WIRE HARNESS	10	1	1	1	1	1
5	315471	RETAINER, WIRE	10	2	2	2	2	2
6	33001836	STRAP, TOP COVER SUPPORT	10	1	1	1	1	1
7	310933	FASTENER	10	2	2	2	2	2
8	22002100	SPRING	10	2	2	2	2	2
9	22002098	SUPPORT, SPRING	10	2	2	2	2	2
10	22001997	SPACER, TOP COVER	10	2	2	2	2	2
11	22002049	CLIP, FRONT PANEL	10	2	2	2	2	2
12	22002090	BRACE, CORNER	10	2	2	2	2	2
13	22001995	SCREW, SHROUD SUPPORT	10	8	8	8	8	8
14	22002001	SUPPORT, HINGE	10	4	4	4	4	4
15	22002033	HOOK, SECURITY	10	2	2	2	2	2
16	22002034	BRACKET, SHROUD SUPPORT (RT)	10	1	1	1	1	1
17	22002035	BRACKET, SHROUD SUPPORT (LT)	10	1	1	1	1	1
18	22001993	BRIDGE, SHROUD SUPPORT	10	1	1	1	1	1
19	22002097	CROSS BRACE, CABINET	10	2	2	2	2	2
20	22001995	SCREW, CROSS BRACE	10	2	2	2	2	2
21	213280	FASTENER, FRONT PANEL	10	2	2	2	2	2
22	22002025	DISC, FRONT PANEL SPACER	10	2	2	2	2	2
23	22001995	SCREW, FRONT CABINET	10	2	2	2	2	2
24	213007	SCREW, CABINET	10	6	6	6	6	6

*COLOR CODE (-)=NOT SHOWN #=SERIES, SER PRE OR RUN NO.

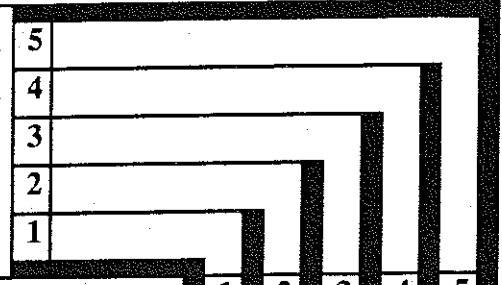
46690

Section: DOOR SHROUD & DOOR LATCH ASSEMBLY

Model: MAH14PDAAL MAH14PDAAW MAH14PDABL MAH14PDABW MAH14PSAAW



MAH14PSAAW
 MAH14PDABW
 MAH14PDABL
 MAH14PDAAW
 MAH14PDAAL



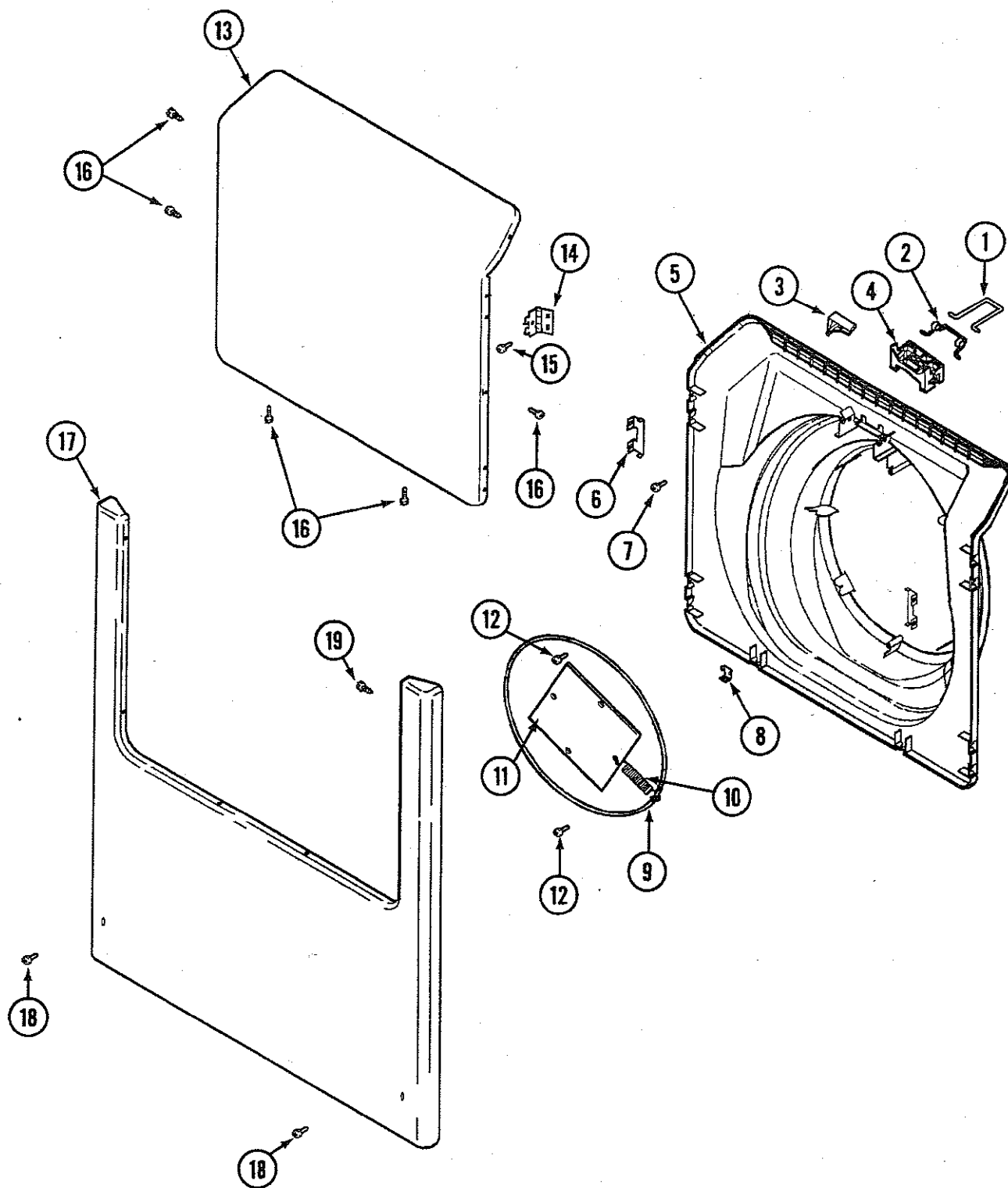
No.	PART NUMBER	DESCRIPTION	#SEE BELOW	1	2	3	4	5
1	22002118	DOOR LATCH ASSEMBLY	10	1	1	1	1	1
2	22002156	SUPPORT, SWITCH	10	1	1	1	1	1
3	22002157	GEAR, ROTATING	10	1	1	1	1	1
4	22002158	SPRING, GEAR RETURN	10	1	1	1	1	1
5	22002159	GEAR, SLIDING	10	1	1	1	1	1
6	22002160	AXLE, LATCH	10	1	1	1	1	1
7	22002119	MOTOR, WAX	10	1	1	1	1	1
8	22002161	SPRING, AXLE	10	1	1	1	1	1
9	22002162	SWITCH, DOOR LOCK SPIN ENABLE	10	1	1	1	1	1
10	22002163	SWITCH, DOOR LATCH	10	1	1	1	1	1
11	22002164	CABLE, DOOR	10	1	1	1	1	1
12	22002007	SCREW	10	1	1	1	1	1
13	22001352	SCREW, CHECK SWITCH	10	3	3	3	3	3
14	22002165	WASHER, DOOR LOCK SWITCH	10	1	1	1	1	1
15	22002046	SWITCH, SECONDARY DOOR (WHT)	10	-	1	-	1	1
	22002047	(ALM)	10	1	-	1	-	-
16	22002070	SHROUD (WHT)	10	-	1	-	1	1
	22002071	(ALM)	10	1	-	1	-	-
17	310376	CLIP, WIRE HARNESS	10	2	2	2	2	2
18	22001995	SCREW, DOOR LOCK SUPPORT	10	4	4	4	4	4
19	22001996	SCREW, WIRE HARNESS CLIP	10	1	1	1	1	1
20	22002014	CLIP, WIRE HARNESS	10	1	1	1	1	1
21	22002095	COVER, HINGE (WHT)	10	-	2	-	2	2
	22002096	(ALM)	10	2	-	2	-	-
22	22002015	SUPPORT, DOOR LOCK	10	1	1	1	1	1

*COLOR CODE | (-)=NOT SHOWN | #=SERIES, SER PRE OR RUN NO.

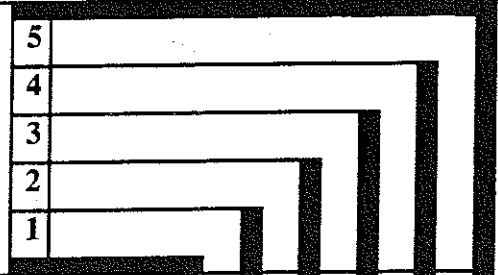
46695

Section: DOOR & FRONT PANEL

Model: MAH14PDAAL MAH14PDAAW MAH14PDABL MAH14PDABW MAH14PSAAW



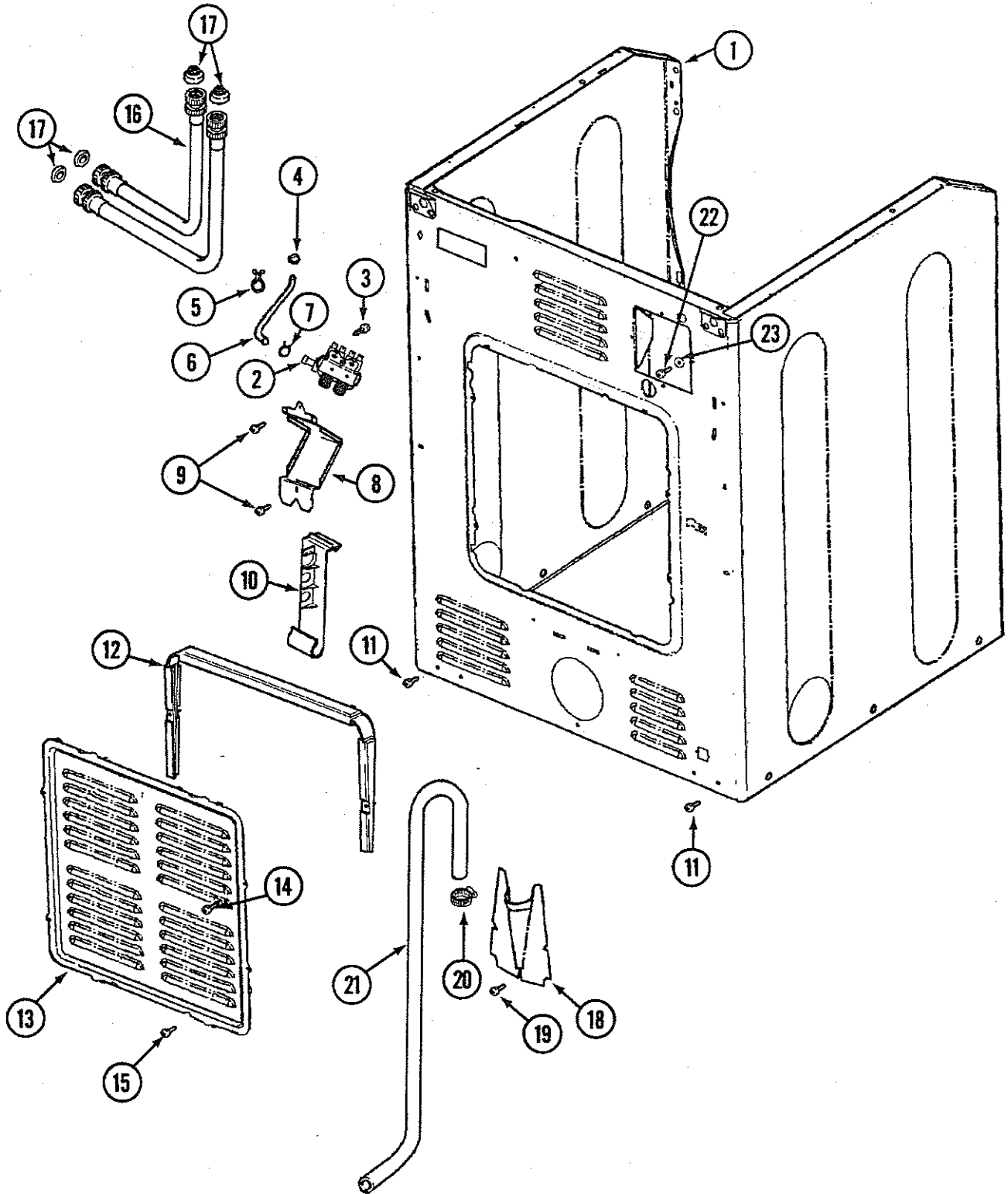
MAH14PSAAW
 MAH14PDABW
 MAH14PDABL
 MAH14PDAAW
 MAH14PDAAL

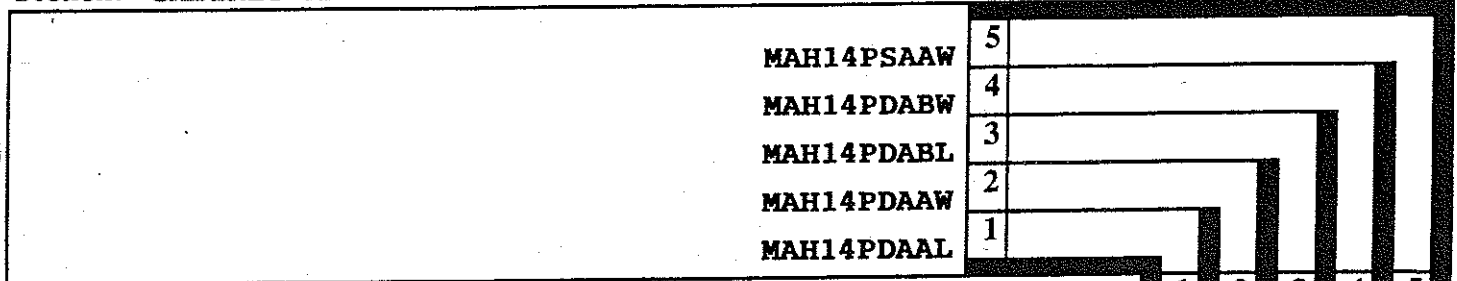


No.	PART NUMBER	DESCRIPTION	#SEE BELOW	1	2	3	4	5
1	22002002	HOOP, LOCK	10	1	1	1	1	1
2	22002003	SPRING, LATCH	10	1	1	1	1	1
3	22002166	STRIKE, SECONDARY DOOR (WHT)	10	-	1	-	1	1
	22002167	(ALM)	10	1	-	1	-	-
4	22002168	SUPPORT, LOCK HOOP	10	1	1	1	1	1
5	22002169	DOOR, INNER (WHT)	10	-	1	-	1	1
	22002170	(ALM)	10	1	-	1	-	-
6	22002038	CLIP, DOUBLE DOOR	10	4	4	4	4	4
7	22002007	SCREW, STRIKE	10	1	1	1	1	1
8	22002039	CLIP, SINGLE DOOR	10	2	2	2	2	2
9	22002104	FRAME, WIRE	10	1	1	1	1	1
10	22002099	SPRING, TUB	10	4	4	4	4	4
11	22002094	PLATE	10	1	1	1	1	1
12	22002007	SCREW, WIRE FRAME	10	2	2	2	2	2
13	22001979	DOOR, OUTER (WHT-W/DAMPER)	10	-	1	-	1	1
	22001980	(ALM-W/DAMPER)	10	1	-	1	-	-
14	22002000	HINGE, DOOR	10	2	2	2	2	2
15	22002062	SCREW, HINGE	10	4	4	4	4	4
16	22002063	SCREW, OUTER DOOR (WHT)	10	-	6	-	6	6
	22002064	(ALM)	10	6	-	6	-	-
17	22002087	PANEL, FRONT (WHT)	10	-	1	-	1	1
	22002088	(ALM)	10	1	-	1	-	-
18	22001496	SCREW, FRONT PANEL	10	2	2	2	2	2
19	22002012	SCREW, FRONT PANEL & HINGE	10	4	4	4	4	4

Section: CABINET-REAR

Model: MAH14PDAAL MAH14PDAAW MAH14PDABL MAH14PDABW MAH14PSAAW



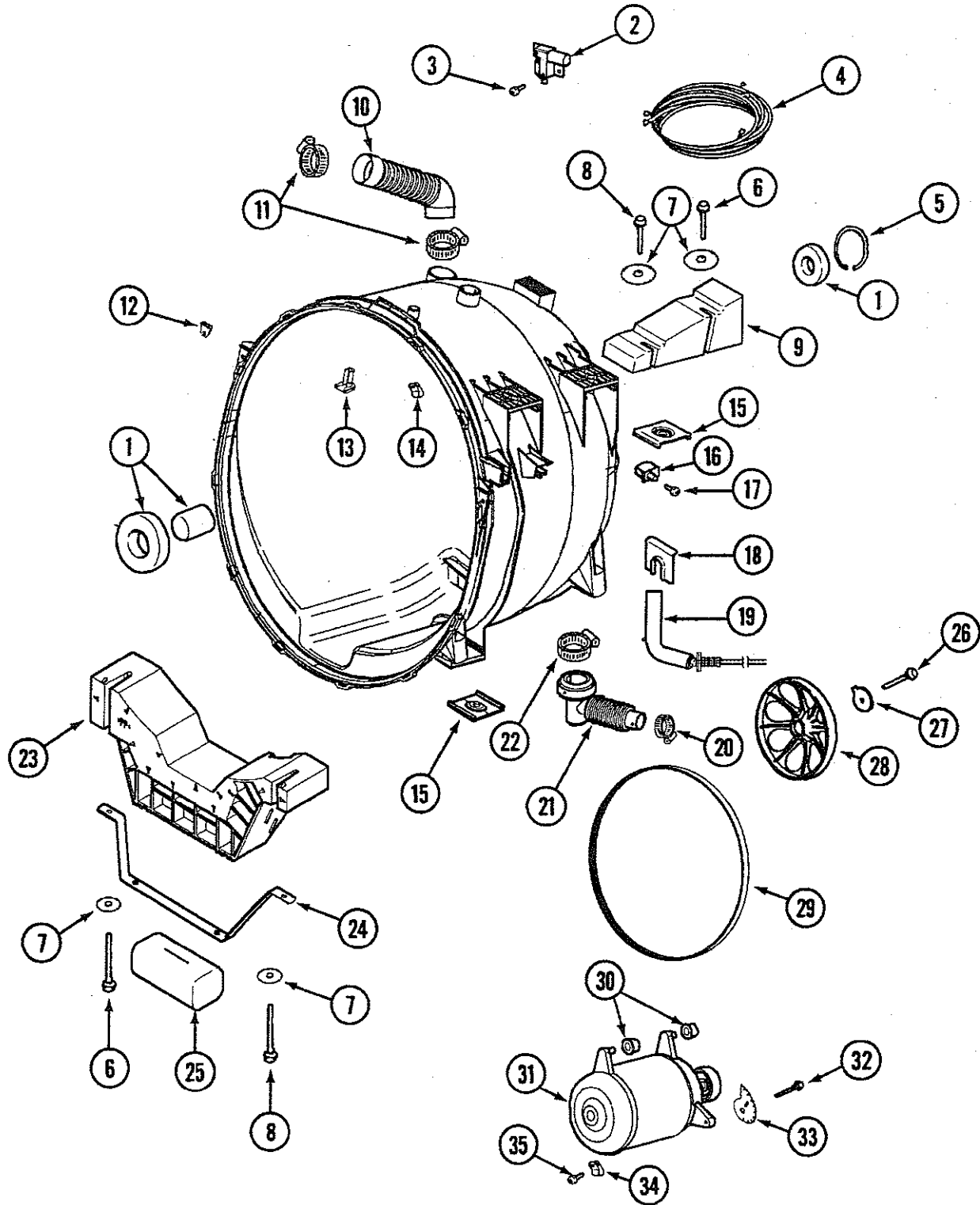


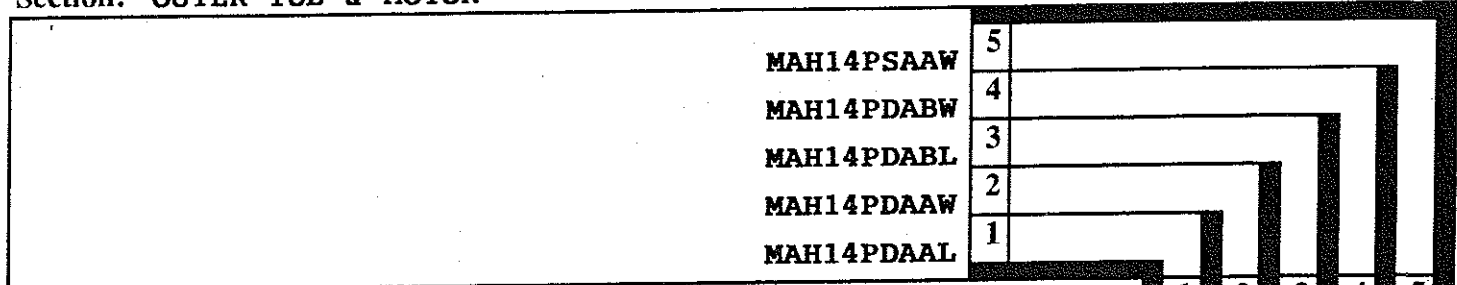
No.	PART NUMBER	DESCRIPTION	#SEE BELOW	1	2	3	4	5
1	22002016	CABINET ASSEMBLY (WHT)	10	-	1	-	1	1
	22002017	(ALM)	10	1	-	1	-	-
2	22002101	VALVE, WATER (TWO COIL)	10	1	1	1	1	1
3	313561	SCREW, WATER VALVE	10	2	2	2	2	2
4	22002054	CLAMP, STEPLESS	10	1	1	1	1	1
5	22002027	WIRE TIE, TWIST LOCK	10	2	2	2	2	2
6	22001987	HOSE, INJECTOR	10	1	1	1	1	1
7	216169	CLAMP, INJECTOR HOSE	10	1	1	1	1	1
8	22002089	BRACKET, WATER VALVE	10	1	1	1	1	1
9	22001996	SCREW, WATER VALVE BRACKET	10	2	2	2	2	2
10	22002076	STRAP, DRAIN HOSE	10	1	1	1	1	1
11	22001995	SCREW, CABINET	10	2	2	2	2	2
12	22002022	SPACER, ACCESS PANEL	10	1	1	1	1	1
13	22002092	PANEL, ACCESS	10	1	1	1	1	1
14	213117	SCREW, ACCESS PANEL SPACER	10	2	2	2	2	2
15	22001996	SCREW, ACCESS PANEL	10	2	2	2	2	2
16	205657	INLET HOSE ASSEMBLY	10	2	2	2	2	2
17	013783	WASHER, INLET HOSE	10	4	4	4	4	4
18	22002093	COVER, DRAIN HOSE	10	1	1	1	1	1
19	22001995	SCREW, DRAIN HOSE COVER	10	1	1	1	1	1
20	22001984	CLAMP, DRAIN HOSE	10	2	2	2	2	2
21	22002085	HOSE, DRAIN	10	1	1	1	1	1
22	33001245	SCREW, GROUND LUG	10	1	1	1	1	1
23	313363	WASHER, GROUND LUG	10	1	1	1	1	1

*COLOR CODE | (-)=NOT SHOWN | #-SERIES, SER PRE OR RUN NO. | 46719

Section: OUTER TUB & MOTOR

Model: MAH14PDAAL MAH14PDAAW MAH14PDABL MAH14PDABW MAH14PSAAW





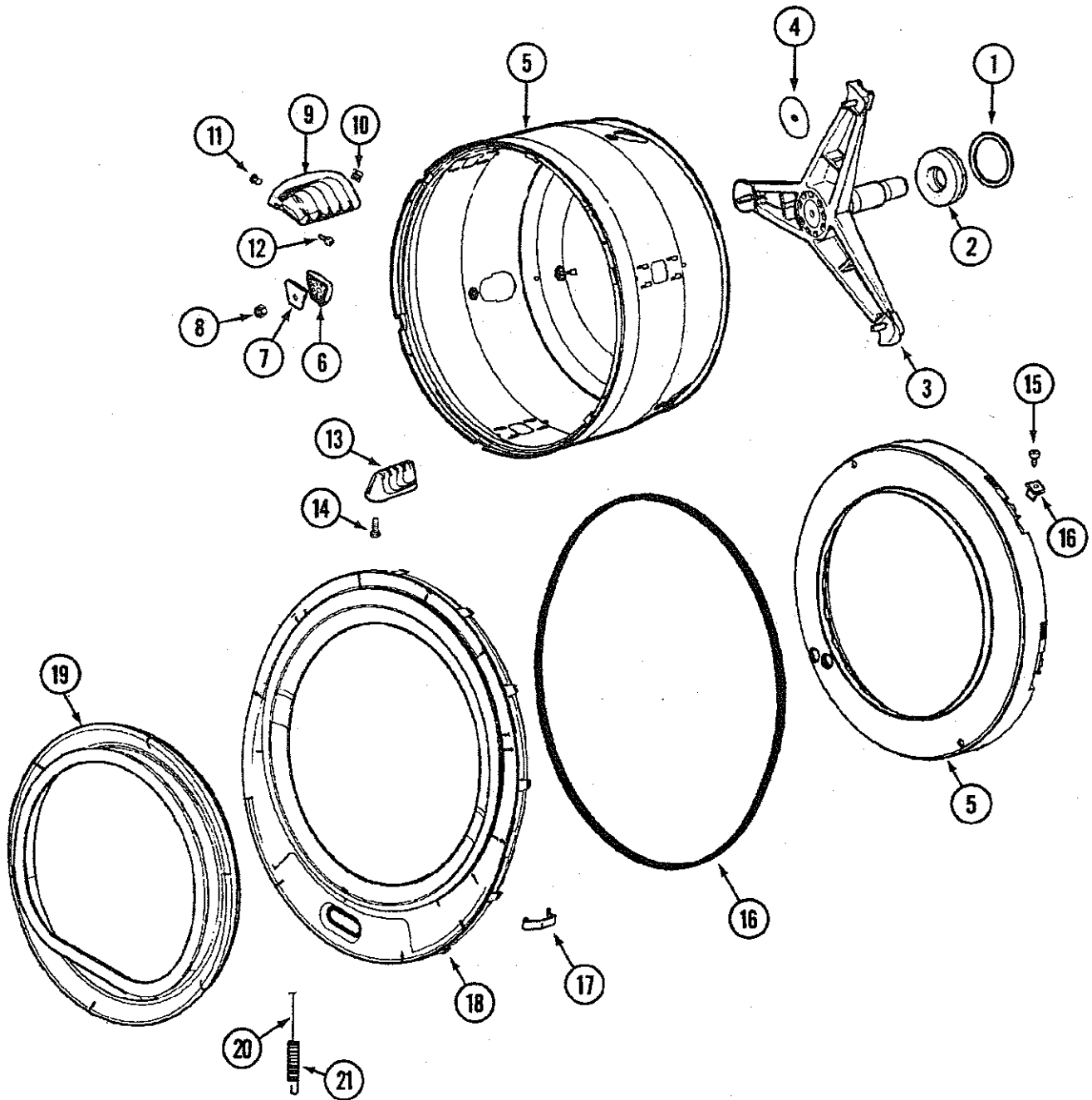
No.	PART NUMBER	DESCRIPTION	#SEE BELOW	1	2	3	4	5
1	22002068	OUTER TUB ASSEMBLY	10	1	1	1	1	1
2	22002045	SWITCH, INERTIAL - UNBALANCE	10	1	1	1	1	1
3	912615	SCREW, INERTIAL SWITCH	10	2	2	2	2	2
4	22002109	WIRE HARNESS, DISPLACEMENT	10	1	1	1	1	1
5	22001981	RING, RETAINING	10	1	1	1	1	1
6	22001991	BOLT (LONG)	10	1	1	1	1	1
7	22002067	WASHER, COUNTER BALANCE	10	4	4	4	4	4
8	22002056	BOLT (SHORT)	10	1	1	1	1	1
9	22002102	BALANCE, COUNTER	10	1	1	1	1	1
10	22002083	HOSE, INJECTOR	10	1	1	1	1	1
11	22002052	CLAMP, INJECTOR HOSE	10	2	2	2	2	2
12	22002103	CLIP, U	10	2	2	2	2	2
13	22002004	DEFLECTOR, WATER	10	1	1	1	1	1
14	22002006	CLIP, WIRE HARNESS & OUTER TUB	10	1	1	1	1	1
-	22002061	SCREW, WIRE HARNESS	10	1	1	1	1	1
15	22002065	NUT, COUNTER BALANCE	10	4	4	4	4	4
16	22002044	SWITCH, DISPLACEMENT	10	1	1	1	1	1
17	22002061	SCREW, DISPLACEMENT SWITCH	10	2	2	2	2	2
18	22002051	CLIP, AIR DOME RETAINING	10	1	1	1	1	1
19	22002010	HOSE, AIR DOME	10	1	1	1	1	1
20	22001984	CLAMP, DRAIN HOSE	10	1	1	1	1	1
21	22002081	HOSE, TUB OUTLET	10	1	1	1	1	1
22	22002053	CLAMP, SUMP HOSE	10	1	1	1	1	1
23	22002106	FRONT WEIGHT ASSEMBLY	10	1	1	1	1	1
24	22002008	STRAP	10	1	1	1	1	1
25	22002011	CUSHION	10	1	1	1	1	1
26	22002057	SCREW, SPINNER	10	1	1	1	1	1
27	22002055	WASHER, SPINNER SHAFT	10	1	1	1	1	1
28	22001998	PULLEY, SPINNER	10	1	1	1	1	1
29	22002040	BELT, DRIVE	10	1	1	1	1	1
30	22002082	ISOLATOR, MOTOR	10	2	2	2	2	2
31	22002005	MOTOR, SR (60HZ-120V)	10	1	1	1	1	1
32	22002058	BOLT, MOTOR	10	1	1	1	1	1
33	22002086	ADJUSTER, BELT TENSION	10	1	1	1	1	1
34	22002014	CLIP, WIRE HARNESS	10	1	1	1	1	1
35	22002019	SCREW, WIRE HARNESS CLIP	10	1	1	1	1	1

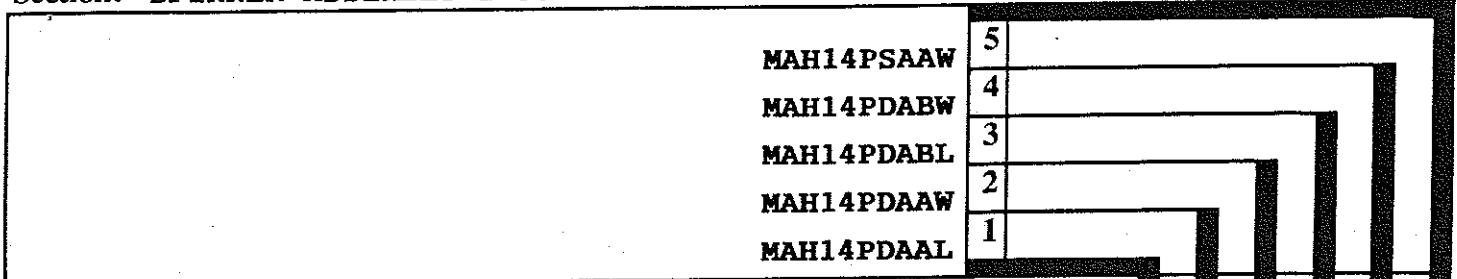
*COLOR CODE | (-)=NOT SHOWN | #=SERIES, SER PRE OR RUN NO.

46723

Section: SPINNER ASSEMBLY & OUTER TUB COVER

Model: MAH14PDAAL MAH14PDAAW MAH14PDABL MAH14PDABW MAH14PSAAW



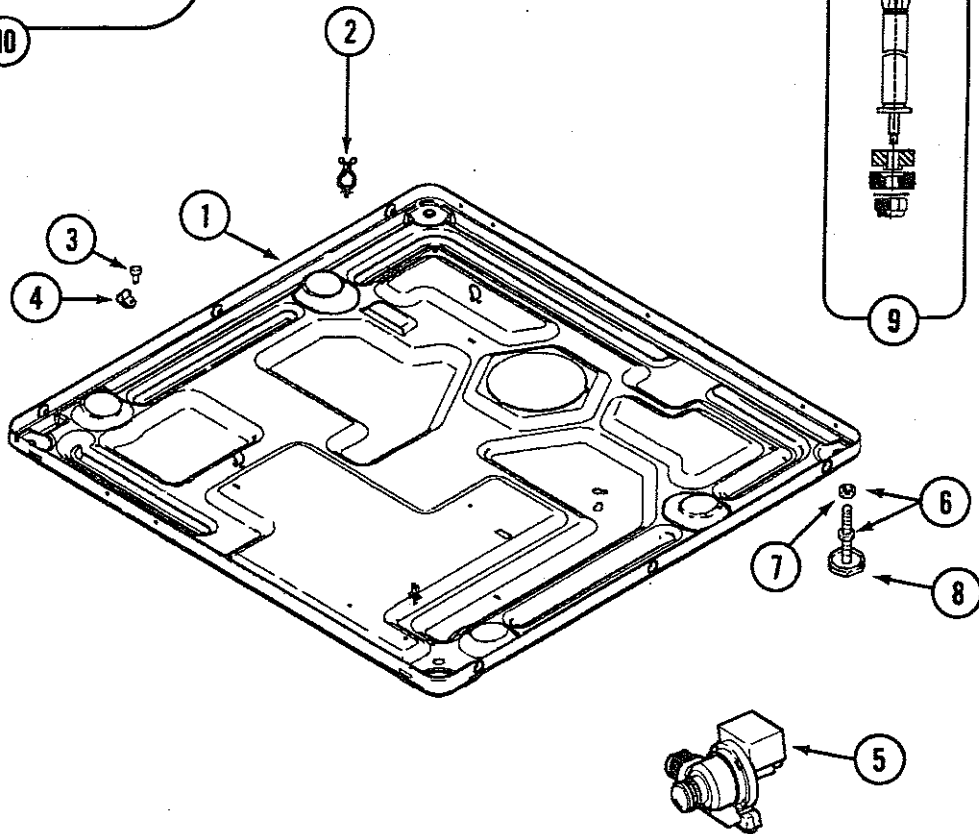
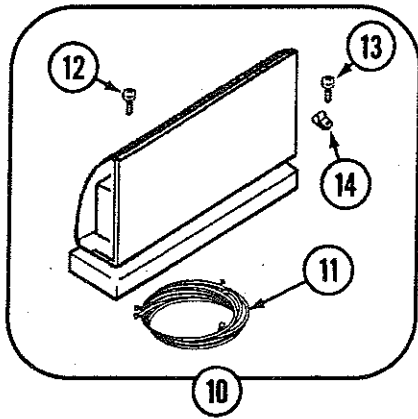


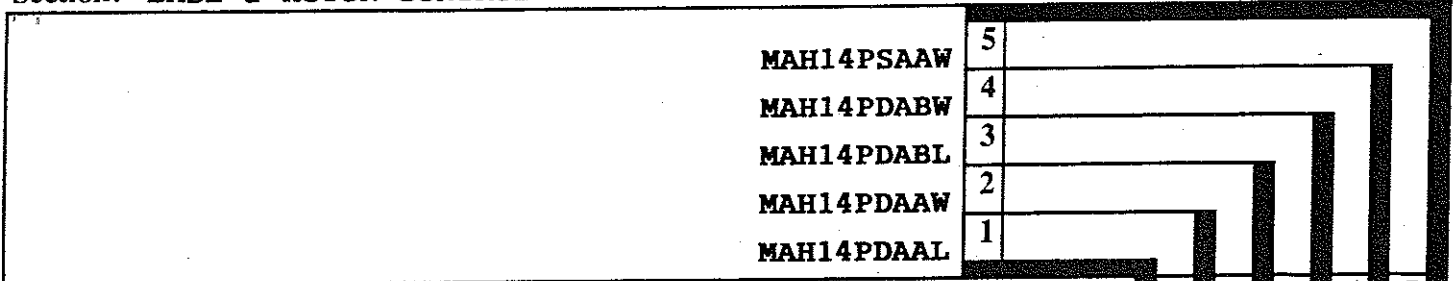
No.	PART NUMBER	DESCRIPTION	#SEE BELOW	1	2	3	4	5
1	22002029	SLEEVE, SHAFT SEAL	10	1	1	1	1	1
2	22001983	LIP SEAL ASSEMBLY	10	1	1	1	1	1
3	22001994	SPINNER SUPPORT ASSEMBLY	10	1	1	1	1	1
4	22002023	WASHER, PLASTIC	10	3	3	3	3	3
5	22002115	SPINNER ASSY. (W/BALANCE RING)	10	1	1	1	1	1
6	22002021	WASHER, PROFILE	10	3	3	3	3	3
7	22002020	WASHER, SPINNER SUPPORT	10	3	3	3	3	3
8	22002122	NUT, SPINNER ATTACHMENT	10	3	3	3	3	3
9	22001985	BAFFLE, DRIP (REAR)	10	3	3	3	3	3
10	22002009	SCREW, GROMMET	10	3	3	3	3	3
11	22001999	SCREW, GROMMET	10	3	3	3	3	3
12	22002059	SCREW, BAFFLE	10	6	6	6	6	6
13	22001986	BAFFLE, DRIP (FRONT)	10	3	3	3	3	3
14	22002059	SCREW, BAFFLE	10	6	6	6	6	6
15	22002028	SCREW, BALANCE RING	10	3	3	3	3	3
16	22002077	SEAL, TUB COVER	10	1	1	1	1	1
17	22002050	CLIP, TUB TO COVER	10	12	12	12	12	12
18	22002069	COVER, TUB (W/SEAL)	10	1	1	1	1	1
19	22001978	BOOT, DOOR	10	1	1	1	1	1
20	22002105	WIRE, BOOT CLAMP	10	1	1	1	1	1
21	22002099	SPRING, TUB	10	1	1	1	1	1

*COLOR CODE | (-)=NOT SHOWN | #-SERIES, SER PRE OR RUN NO. | 46768

Section: BASE

Model: MAH14PDAAL MAH14PDAAW MAH14PDABL MAH14PDABW MAH14PSAAW



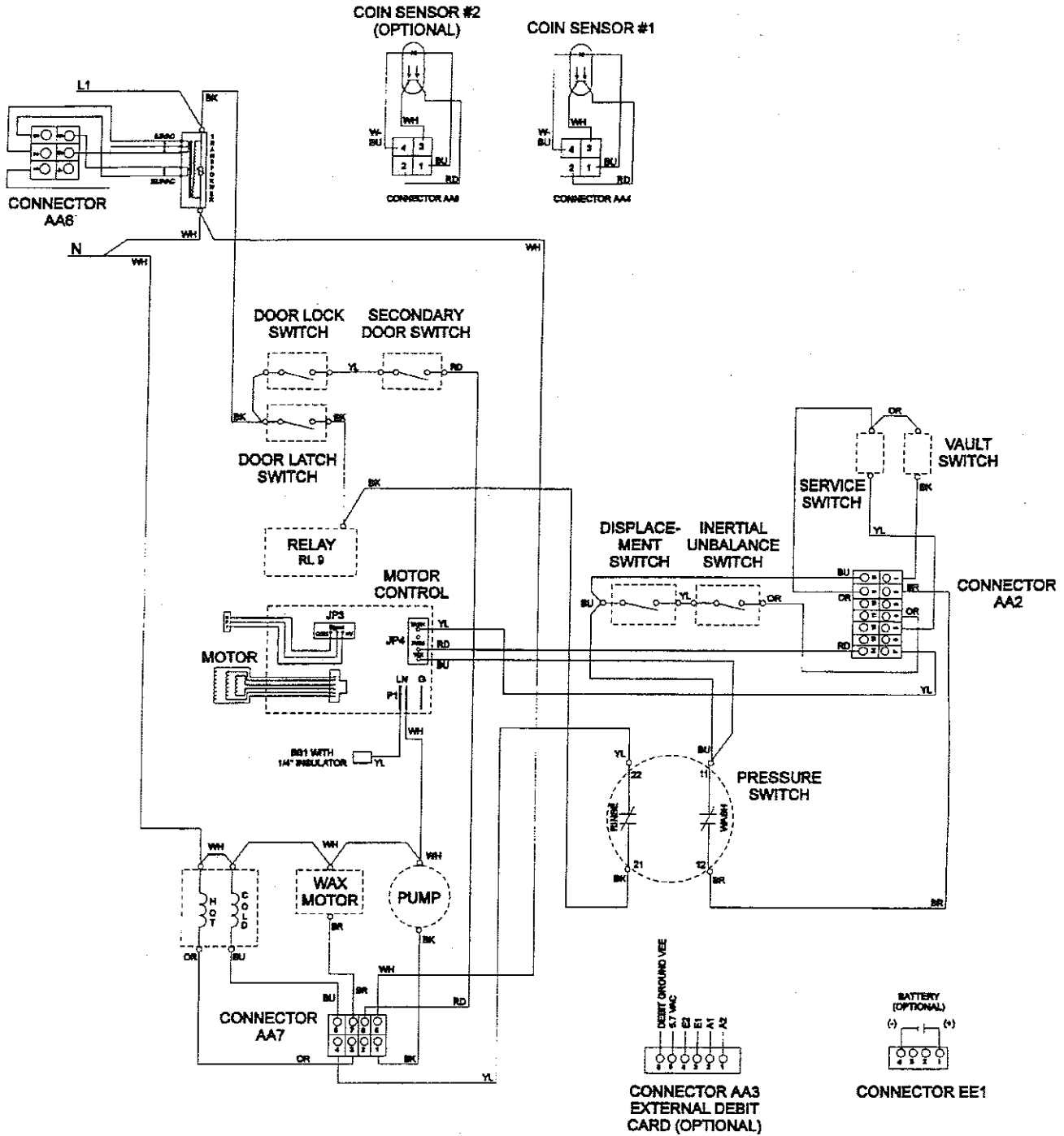


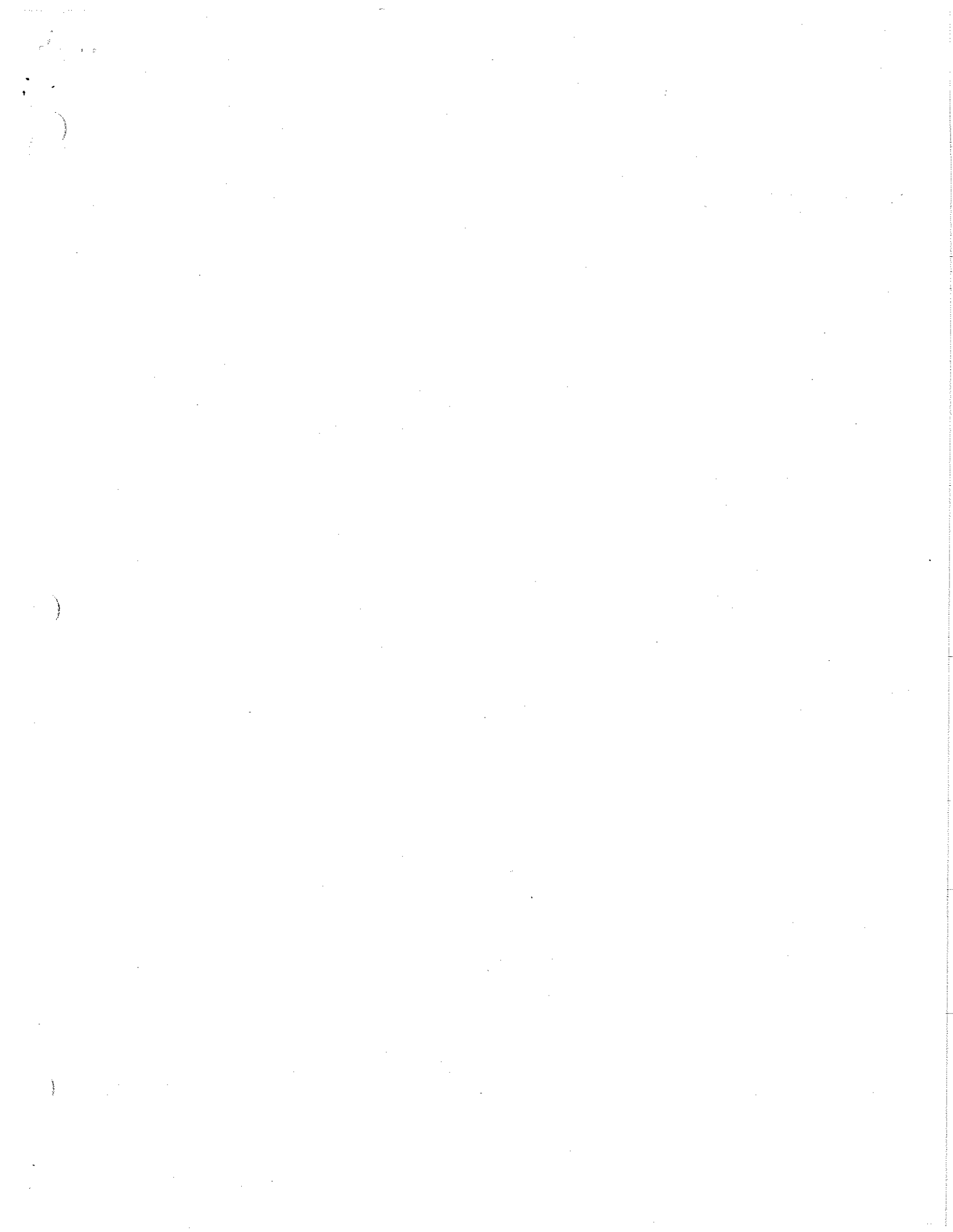
No.	PART NUMBER	DESCRIPTION	#SEE BELOW	1	2	3	4	5
1	22002111	BASE	10	1	1	1	1	1
2	315471	RETAINER, WIRE	10	5	5	5	5	5
3	212276	SCREW, WIRE HARNESS CLIP	10	1	1	1	1	1
4	22002014	CLIP, WIRE HARNESS	10	1	1	1	1	1
5	22001982	PUMP	10	1	1	1	1	1
6	22001915	ADJUSTABLE LEG & NUT	10	4	4	4	4	4
7	052740	NUT, LEG	10	4	4	4	4	4
8	210684	FOOT, RUBBER	10	4	4	4	4	4
9	22001988	REAR STRUT ASSEMBLY	10	2	2	2	2	2
10	22002120	MOTOR CONTROL ASSEMBLY	10	1	1	1	1	1
11	22002172	WIRE HARNESS, MOTOR CONTROL	10	1	1	1	1	1
12	212276	SCREW, MOTOR CONTROL BRACKET	10	2	2	2	2	2
13	210720	RIVET, WIRE HARNESS CLIP	10	1	1	1	1	1
14	22002173	CLIP, WIRE HARNESS	10	1	1	1	1	1

*COLOR CODE | (-)=NOT SHOWN | #-SERIES, SER PRE OR RUN NO. | 46773

Section: WIRING INFORMATION

Model: MAH14PDAAL MAH14PDAAW MAH14PDABL MAH14PDABW MAH14PDSA AW





MAYTAG

Customer Service
240 Edwards St.
Cleveland, TN 37311